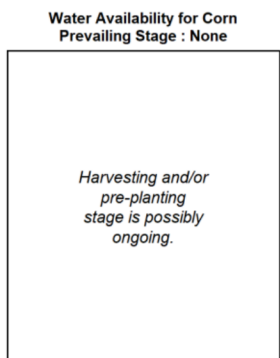
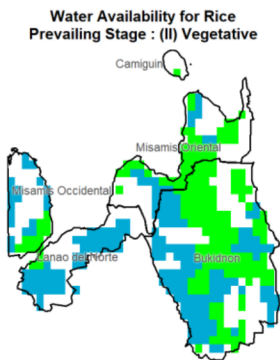


Region X (Northern Mindanao)



Provincial Values

	Mon. Ave. Rainfall (mm)	Rice		Corn	
		CS	CCI (%)	CS	CCI (%)
Bukidnon	210.3	I	227.4	I	381.9
		II	217.4	II	327.2
		III	212.8	III	291.0
		IV	212.8	IV	325.4
Camiguin	227.7	I	177.6	I	271.8
		II	166.6	II	206.0
		III	161.6	III	169.6
		IV	161.6	IV	204.1
Lanao del Norte	340.1	I	338.3	I	532.9
		II	324.3	II	445.1
		III	317.8	III	392.4
		IV	317.8	IV	442.5
Misamis Occidental	365.3	I	238.5	I	420.7
		II	224.3	II	344.7
		III	217.7	III	295.3
		IV	217.7	IV	342.3
Misamis Oriental	264.3	I	219.8	I	380.8
		II	208.8	II	313.5
		III	203.7	III	272.7
		IV	203.7	IV	311.4

Crop Stage (CS) highlighted in black is the dominant stage during the month of January.

Rice CS: (I) Nursery, (II) Vegetative, (III) Reproductive, (IV) Ripening
 Corn CS: (I) Establishment, (II) Vegetative, (III) Reproductive, (IV) Maturity

CCI Category: Inadequate (Yellow), Sufficient (Green), Excess (Blue)

Regional Summary

Most of the provinces in the region received excessive rainfall during the month which might be detrimental to rice crops, except over Camiguin where rainfall was sufficient. Meanwhile, land preparation is possibly ongoing for the corn crops.

Generally, near-normal conditions have prevailed in most parts of the region, with slightly above normal rainfall over most parts of Misamis Occidental, Lanao del Norte, and some parts of Misamis Oriental (see SPEI3), whereas the NDVI suggests good crop conditions for the month. Moreover, RX1day suggests that no significant rainfall event occurred in the area, even if RX5day had a slightly higher rainfall amount over Misamis Occidental, which could have been attributed to the Intertropical Convergence Zone (ITCZ) and the Shearline.

